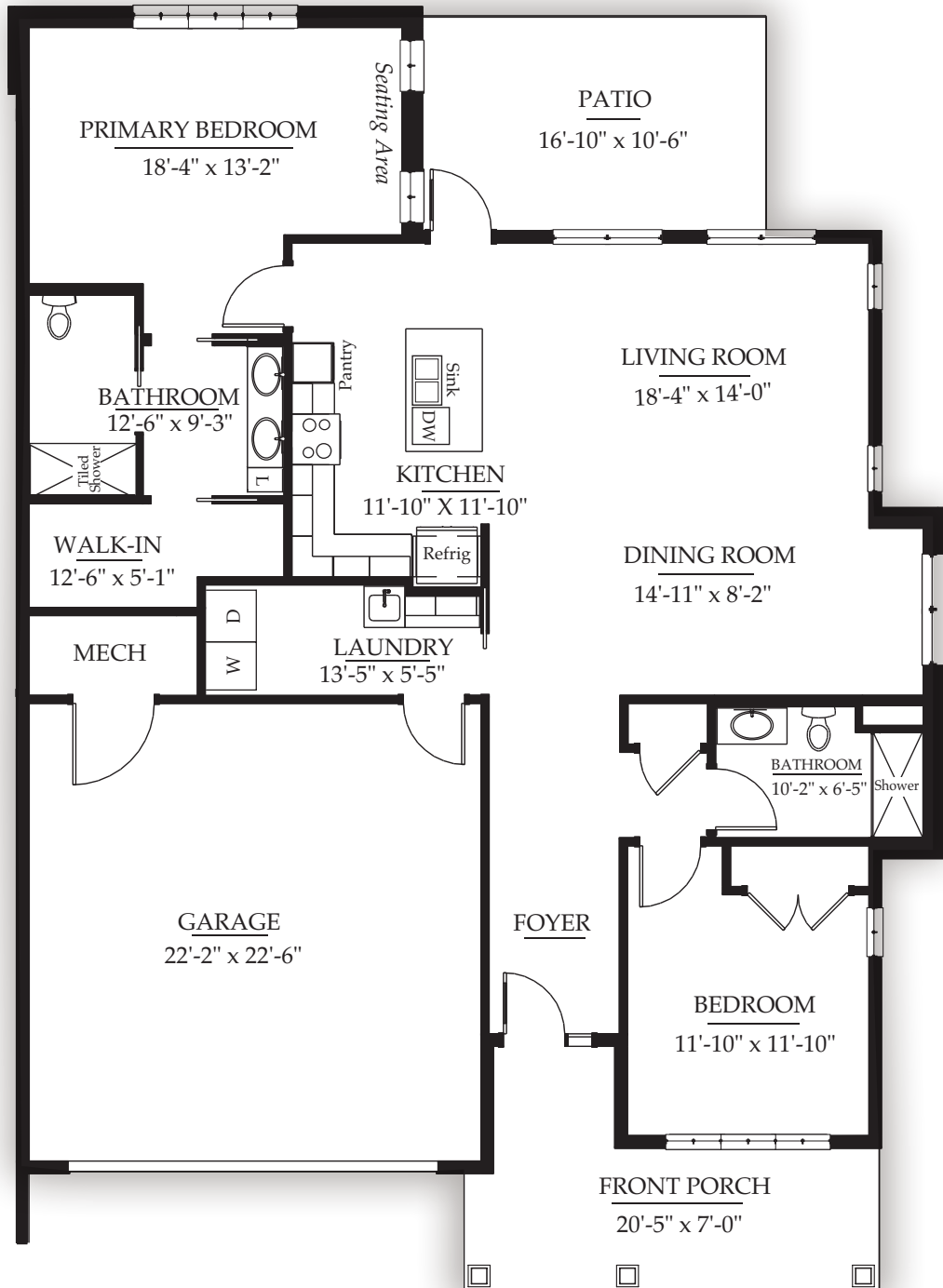




CROSS KEYS VILLAGE

The Brethren Home Community

KENT SHISLER
2 BEDROOM, 2 BATH,
2 CAR GARAGE



Bridgewater

2990 Carlisle Pike
New Oxford, PA 17350
717-624-5350 www.crosskeysvillage.org

Square footage is approximate. Details may vary.

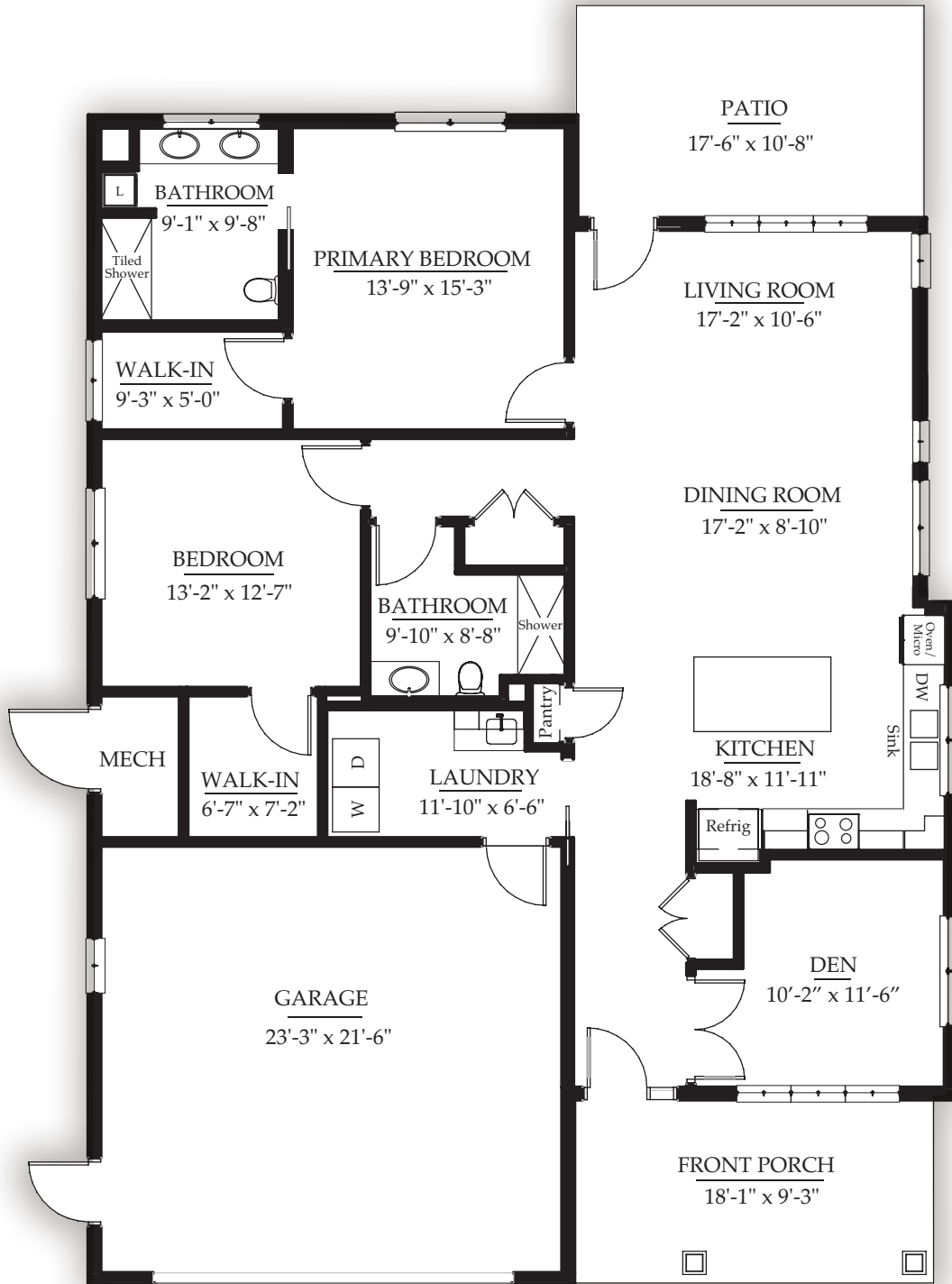




CROSS KEYS VILLAGE

The Brethren Home Community

ESTHER PENTZ
2 BEDROOM, 2 BATH, DEN,
2 CAR GARAGE



Bridgewater

2990 Carlisle Pike
New Oxford, PA 17350
717-624-5350 www.crosskeysvillage.org

Square footage is approximate. Details may vary.

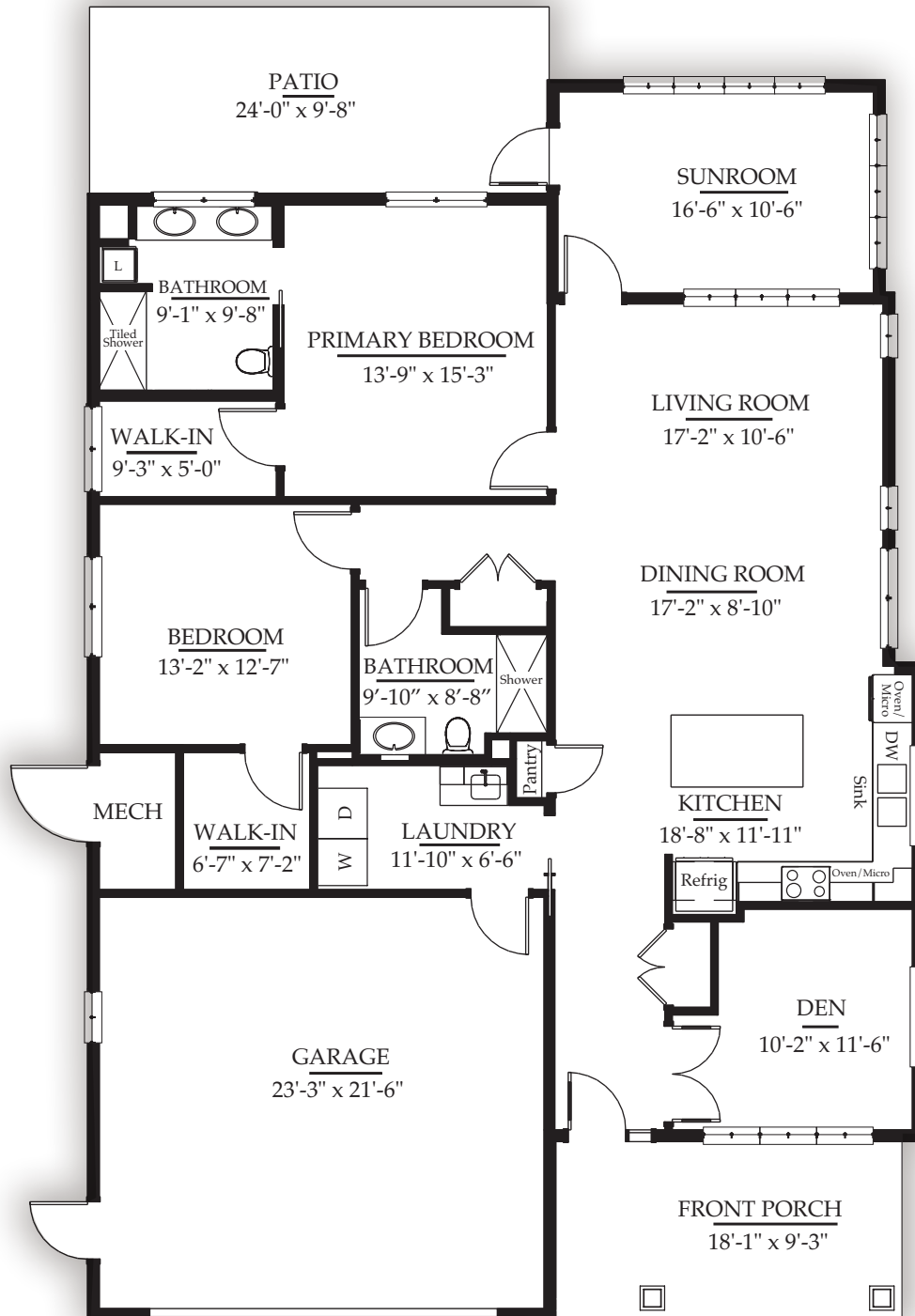




CROSS KEYS VILLAGE

The Brethren Home Community

ESTHER PENTZ DELUXE
2 BEDROOM, 2 BATH, DEN,
SUNROOM, 2 CAR GARAGE



Bridgewater

2990 Carlisle Pike
New Oxford, PA 17350

717-624-5350 www.crosskeysvillage.org

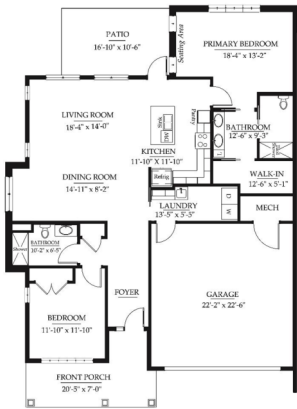
Square footage is approximate. Details may vary.





Bridgewater Landing

PRICES EFFECTIVE JANUARY 1, 2024



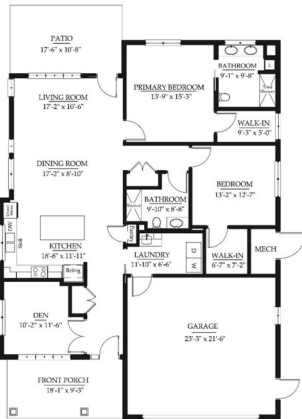
Kent Shisler (duplex)

Two bedrooms - Two full baths - Two-car garage

1,603 square feet - Entrance fee: \$390,300

Monthly fee: \$1,623 (single occupancy) \$1,773 (double)

The entrance fee above will be honored for future villagers who reserve a new home by June 30, 2024. The monthly fee above is subject to yearly increases at the turn of our fiscal year beginning in July 2026.



Esther Pentz (single)

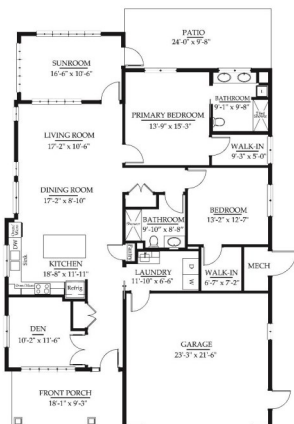
Two bedrooms - Two full baths - Two-car garage

1,691 square feet - Entrance fee: \$411,700

Esther Pentz Deluxe (single)

Two bedrooms - Two full baths - Sunroom - Two-car garage

1,881 square feet - Entrance fee: \$448,000



Monthly fee: \$2,028 (single occupancy) \$2,178 (double)

The entrance fee above will be honored for future villagers who reserve a new home by June 30, 2024. The monthly fee above is subject to yearly increases at the turn of our fiscal year beginning in July 2026.